

NH-Z-200-HC

Achieve Temp Comfort in Every Room

WORKS WITH YOUR DUCTED SYSTEM

One-Hour Z200 Control Panel & Board



PRODUCT DETAILS

Adding the **One-Hour Z200 Control Panel & Board** to your HVAC system is one way to maximize energy efficiency, personal comfort and savings. The system gives homeowners control over how, when, and at what temperature a home is cooled/heated, including the ability to turn off cooling or heating to certain rooms. A system of motorized dampers is installed into existing ductwork, and is controlled by one thermostat for total convenience.

- Greater energy efficiency
- Control comfort levels
- Less wear and tear on system

FEATURES

- 6 zones expandable to 12
- Auto changeover
- Priority cooling or majority wins
- Twenty minute time share option
- LED status indication
- On-board adjustable high & low limits & balance points
- Staging by zone thermostat or adjustable staging timer
- Purge cycle option
- 10-year warranty

This Product Controls



The EPA has ranked indoor air pollution among the top five environment dangers to the public.

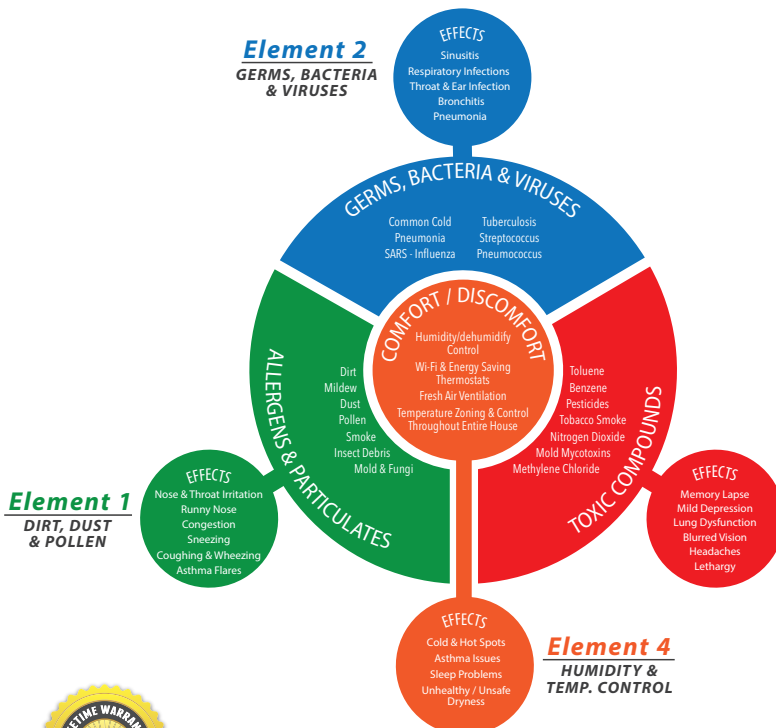


ENERGY AWARE

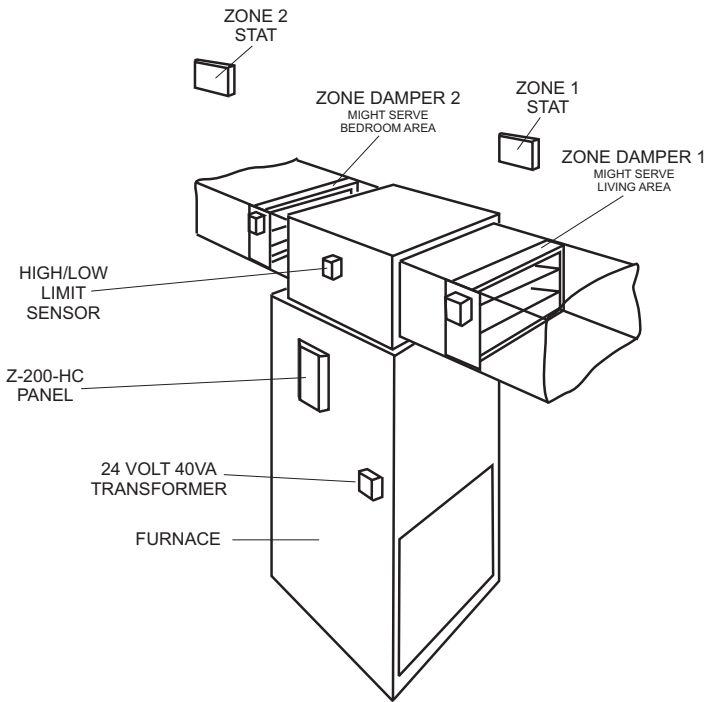
Element 3 TOXIC GASES & ODORS

APPLICATION

- Customize temperature in every room
- Achieve greater comfort in main living spaces
- Lower utility bills



TYPICAL SYSTEM LAYOUT



PRODUCT SPECIFICATIONS

Construction	Aluminum back plate with mounting holes
Mounting	Snap track with 2 back plate screws
Dimensions	6.0" x 8.0" x 1.4" (WHD)
Operating Temperature	-40° to 150° F
Time Delays	3 minutes off between cooling calls 3 minutes off on low limit 20 minute time share

MOUNTING THE PANEL

- Carefully remove the Z-200 panel and cover from the shipping carton
- Slide PC board out of snap track base & mount the base to a flat surface either on or near the HVAC indoor unit in an area that will facilitate easy access for wiring
- Reinstall the PC board by carefully centering it over the base & snapping it back into the track grooves

WIRING ZONE THERMOSTATS AND DAMPERS

- Wire zone 1 thermostat & its associated damper to the ZONE 1 terminals on the logic panel
- Wire zone 2 thermostat and damper in the same manner

WIRING HVAC EQUIPMENT

- Wire the HVAC unit to the Z-200-HC HVAC panel terminals
- Do not wire the equipment common to the Z-200-HC panel

INSTALLING AND WIRING THE Z-200-DAS DISCHARGE AIR SENSOR

- Drill a ½" hole in the middle of the main discharge air plenum approximately 18" downstream of the heat exchanger
- Remove the Z-200-DAS cover
- Slide the probe into the hole and use two self tapping sheet metal screws to secure the base making sure that the gasket is in place
- Use 18-2 thermostat wire and wire nuts to attach the sensor leads. Replace the cover and wire the sensor to the DAS terminals on the Z-200-HC panel

SAFETY NOTES

- Turn power off to HVAC unit and control panel

