

# Control Home Temperature Anytime, Anywhere

WORKS WITH APPLE  
HOMEKIT, AMAZON ALEXA  
AND WINK!



## Comfort Sentry™ Sensi™ Wi-Fi Thermostat

### PRODUCT DETAILS

The Sensi Wi-Fi Thermostat allows home temperature to be controlled from anywhere, anytime, with just one click. The Sensi App is installed on mobile devices, making remote thermostat programming and operation simple and intuitive. Homeowners can now achieve instant comfort the moment they return home. Plus, no more wasteful heating and cooling when homeowners are away.

- Connect from most mobile devices
- Control multiple thermostats at once

### FEATURES

- The app connects thermostat to home Wi-Fi router-no additional accessories/gateway required
- Functional and effective without Wi-Fi
- Program a schedule for each day of the week that fits your lifestyle
- Geofencing feature uses your smartphone's location to automatically adjust your thermostat
- Alerts you when extreme temperature or humidity changes are detected
- Universal 4 Heat/2 Cool
- Easily and quickly connect to contractor for all HVAC needs

#### This Product Controls



The EPA has ranked indoor air pollution among the top five environment dangers to the public.



TEMPERATURE CONTROL



PROGRAMMABLE

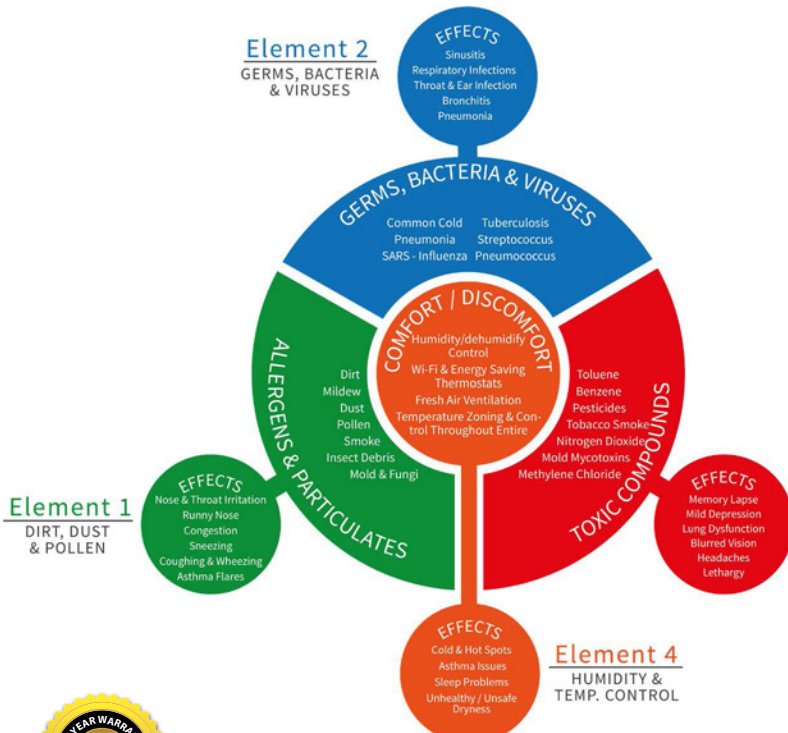



WiFi

#### Element 3 TOXIC GASES & ODORS

### APPLICATION

- Easy Install and Setup to upgrade any standard system without running new wires
- Connects with communicating platforms like Apple Homekit, Amazon Alexa, and Wink



	PROGRAMMING OPTIONS			SYSTEM COVERAGE	MAX STAGES HEAT/COOL		
	PROGRAMMABLE (P) AND/OR NON-PROGRAMMABLE (NP)	PROGRAM OPTIONS	PERIODS PER DAY		CONVENTIONAL		HEAT PUMP
	P, NP	7-DAY, NP	8 MAX		SINGLE STAGE	MULTI-STAGE	
				UNIVERSAL SINGLE STAGE, MULTI-STAGE OR HEAT PUMP	1/1	2/2	4/2

## ADVANCED FEATURES

### DUAL FUEL APPLICATIONS

Automatic staging for heat pump/ gas furnace without the need for outdoor sensor or additional equipment.

### AUTO CHANGEOVER

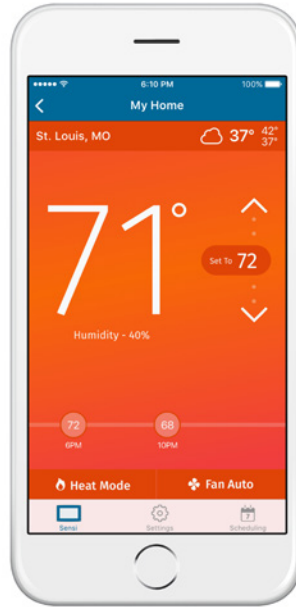
Automatically switches between heating and cooling within the set range.

### KEYPAD LOCKOUT

Ideal for light commercial applications - lock the thermostat keypad and keep the control from the Sensi app.

### BACKLIT DISPLAY

Easy-to-read screen in low light.



The app changes color to let you know at a glance whether the system is heating or cooling.

### REMOTE ACCESS

Set, change and program home comfort from anywhere.

### FLEXIBLE SCHEDULING

Program schedule for each day of the week.

### LOCAL WEATHER

Get easy weather updates.

### HUMIDITY SENSOR

Displays indoor humidity on the thermostat and in the app.

MODEL NUMBER	PROGRAM OPTIONS			MAX STAGES HEAT/COOL		APPLICATIONS				POWER SOURCE		SELECTABLE PERFORMANCE FEATURES						COMFORT & CONVENIENCE FEATURES					
	WI-FI CONTROL/SMART HOME QUALIFIED	7 DAY	NON-PROGRAMMABLE	CONVENTIONAL	HEAT PUMP	GAS/OIL/ELECTRIC	3 WIRE ZONE	MULTIVOLT	P/TAC COMPATIBLE	BATTERY	HARDWIRE (24V)	AUTO CHANGEOVER	PROGRAMMABLE FAN	EMR/EARLY START PROGRAM	TEMPERATURE LIMITS	HUMIDITY DISPLAY	DUAL FUEL CONTROL	REMOTE SENSOR	FILTER CHANGE REMINDER	AUTO DST ADJUST	KEYPAD LOCKOUT	CONT. BACKLIGHT W/ COMMON	PERMANENT MEMORY
NH-AWIFI	●	●	●	2/2	4/2	●	●		●	●	●	●				●	●			●	●	●	●

## TERMINAL DESIGNATIONS

† Thermostat has internal jumper on RC and RH. On two transformer systems, clip red jumper wire on thermostat.



## INSTALLATION INSTRUCTIONS

1. Download the Sensi mobile application on your smart device from the Apple or Android app store.
2. Follow the step-by-step instructions in the application. *It's that simple!*

## SAFETY NOTES

- The use of personal protective equipment is always recommended
- Always turn off the power to the heating and cooling system before handling the thermostat wires
- Make sure all wires are screwed in tightly and securely

