

Remove Harmful Agents From Indoor Air

Comfort Sentry™ MERV 13 Air Cleaner



NH1410-13
NH1310-13
NH1210-13

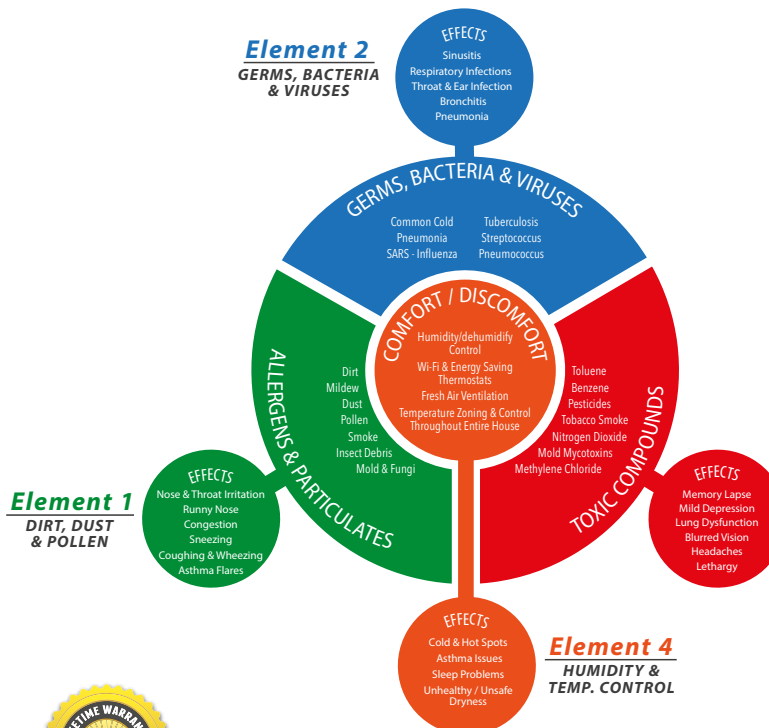
PRODUCT DETAILS

The **Comfort Sentry™ Elite MERV 13 Media Air Cleaner** works with your HVAC system to keep your indoor air cleaner and safer for you and your family. The system permanently traps up to 75% of bacteria sized particles, 90% of respirable dust and pet dander sized particles and, 90% of pollen, mold and spore sized particles. The MERV 13 air cleaner is a quick, easy to install upgrade for families with allergies, asthma, pets, or those just want safer, cleaner air in their home.

- Uses no energy to operate
- Keeps your internal HVAC system clean
- Narrow 6.75" cabinet for easier installation and flexibility in applications

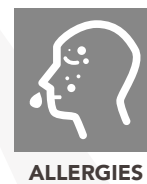
FEATURES

- Self Seal™ Media prevents bypass air ensuring all of the air is cleaned as it goes through the unit
- Outer housing is heavy gauge, pre-assembled galvanized steel and can support a 400 Lb. furnace
- Self aligning painted door easily snaps into place
- UL classified
- Completely silent
- Lifetime warranty on original equipment installation



This Product Controls
1 2 3 4

The EPA has ranked indoor air pollution among the top five environment dangers to the public.



APPLICATION

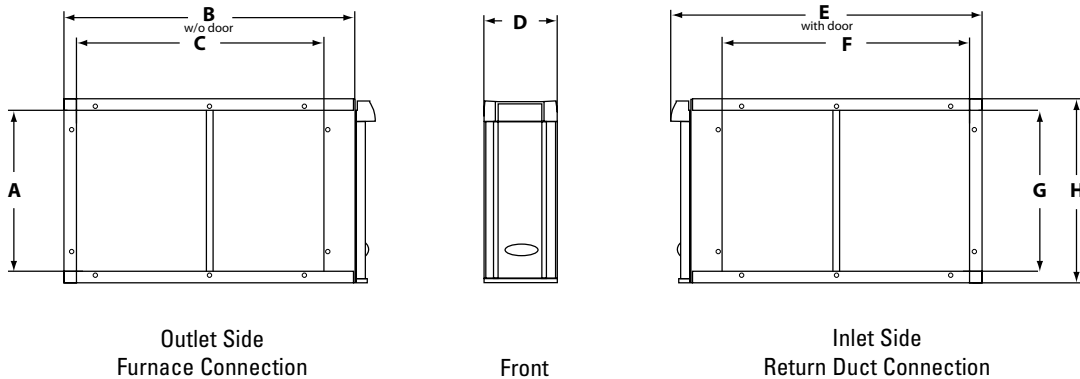
- Great for homes with pets
- Relief for individuals with asthma
- Allergy relief



PRODUCT SPECIFICATIONS

Dimension	Description	Model 1210	Model 1310	Model 1410
A	Outlet Opening Height	19.75" (502mm)	18.06" (459mm)	15.44" (392mm)
B	Outer Housing Depth Without Door	25.38" (645mm)	20.06" (510mm)	28.06" (713mm)
C	Outlet Opening Width	21.19" (557mm)	15.88" (403mm)	23.88" (625mm)
D	Unit Width	6.75" (254mm)	6.75" (254mm)	6.75" (254mm)
E	Outer Housing Depth With Door	27.38" (679mm)	22.06" (560mm)	30.06" (749mm)
F	Inlet Opening Width	21.19" (502mm)	15.88" (403mm)	23.88" (606mm)
G	Inlet Opening Height	19.75" (546mm)	18.06" (459mm)	15.44" (392mm)
H	Unit Height	22.06" (560mm)	20.38" (518mm)	17.75" (451mm)

PRODUCT SCHEMATIC



INSTALLATION INSTRUCTIONS

1. Position the cabinet alongside the furnace with the access door opening facing outward.
2. Align the cabinet opening on the furnace.
3. Secure the cabinet to the furnace using sheet metal screws in the pre-drilled cabinet mounting holes.
4. Use a butt joint to attach the duct to the upstream side of the cabinet. NOTE - If necessary, use sheet metal turning vanes to improve air movement through an elbow in the duct.
5. Connect the next section of the duct. If necessary, use a properly sized wooden block to support a duct elbow.
6. Use foil tape to seal all duct joints. This prevents dust from entering the air stream.
7. Insert side rails into the cabinet and use the provided screws to secure them to the cabinet at both the top and bottom.
8. Slide the filter into the rail and secure the cabinet door.

SAFETY NOTES

- Do not operate without Filter Cabinet door in place. Operation of this equipment without the Filter Cabinet door in place may cause exhaust fumes to be drawn into occupied spaces.
- Equipment sharp edges can cause injuries. Use protective gloves when grasping equipment edges.

